

Precautions <VarioskanLUX>

About セッション(session)

You should build a *session* before reading a plate.

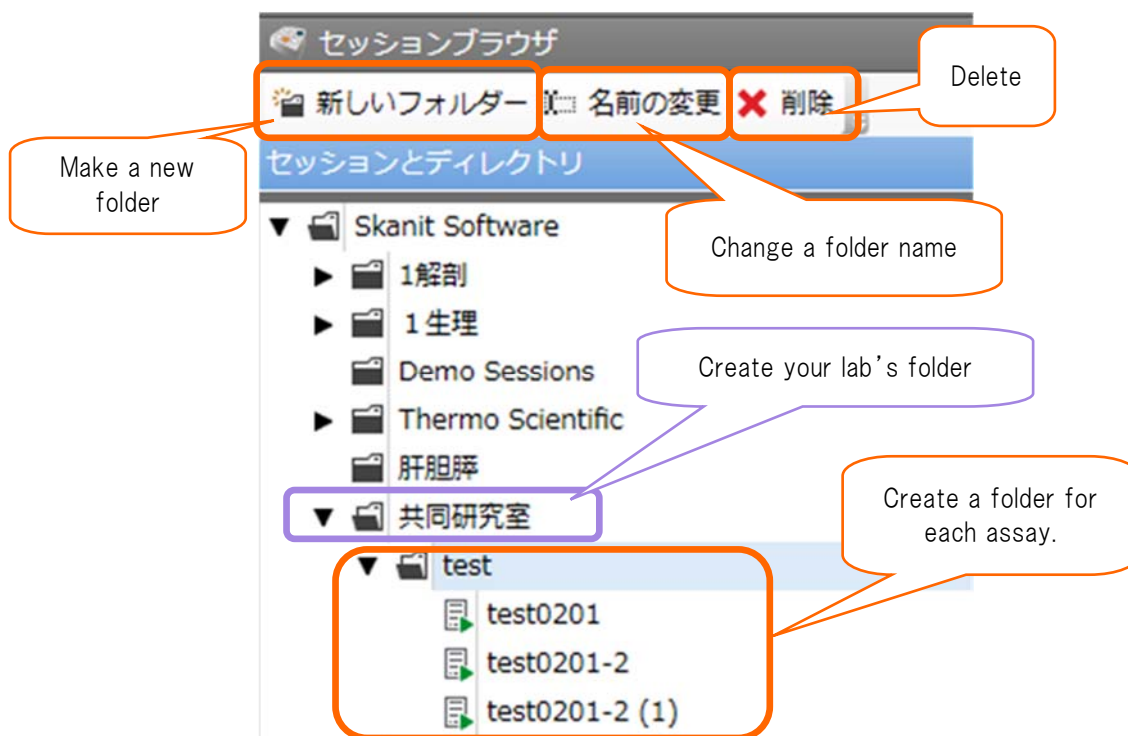
A *session* have following contents.

Measurement protocol, Plate layout, Results, Analysis setting and results and Export file settings

Measured session can start reading protocol but a new raw-data must not overwrite on a previous raw-data.

A *session* must be saved at the determined location in the database.

<Session tree>



※ Sessions are named with the alphabet and numbers.

Plate Adapters

You should read a plate with a suitable plate adapter.

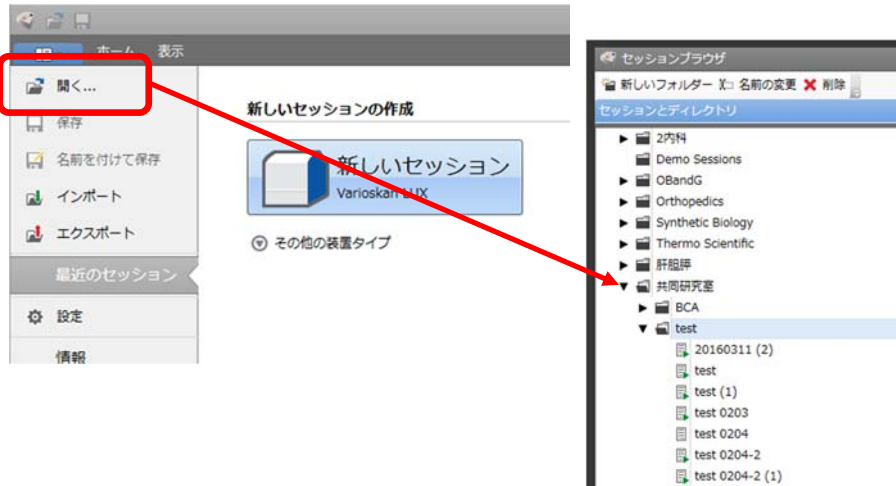
Before you start to read a plate, check that the correct plate adapter is in the plate tray.

Choose the adapter based on the plate format you have (24,96,...) and you are using lid or not.

<How to measure by the previous protocol>

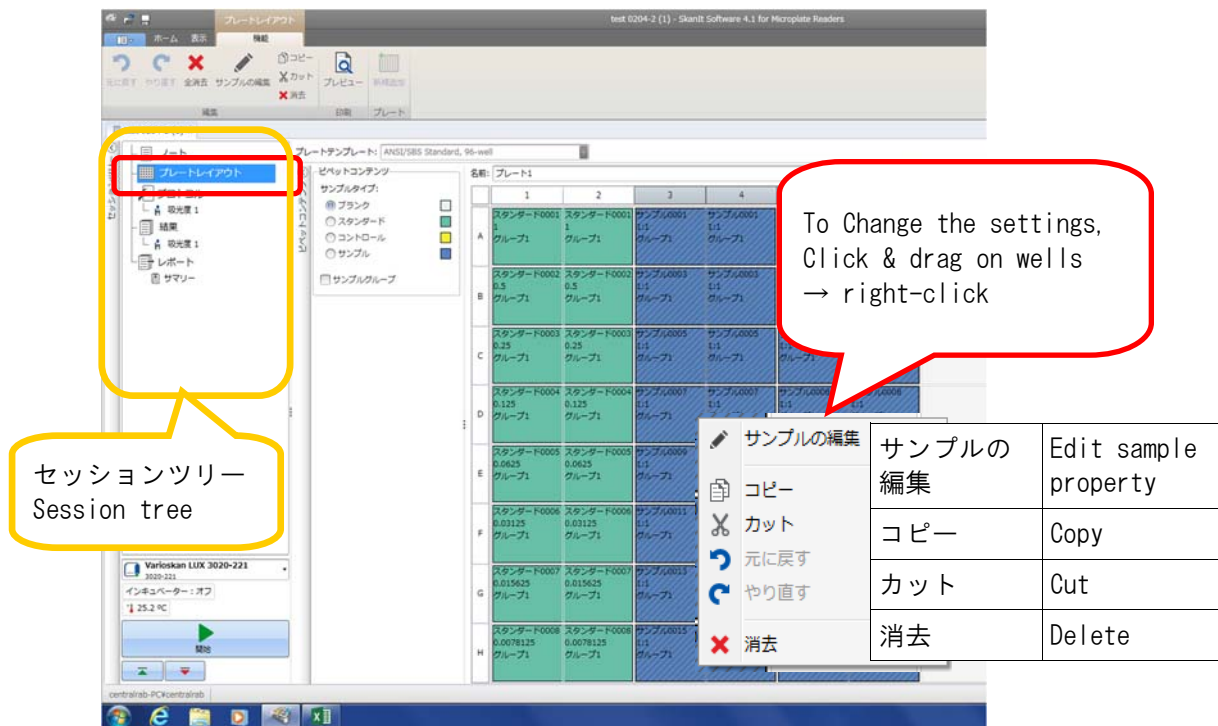
- ① Open a previous session
- ② Change plate layout settings
- ③ Start to read a plate
- ④ Export results

① Open the measured session



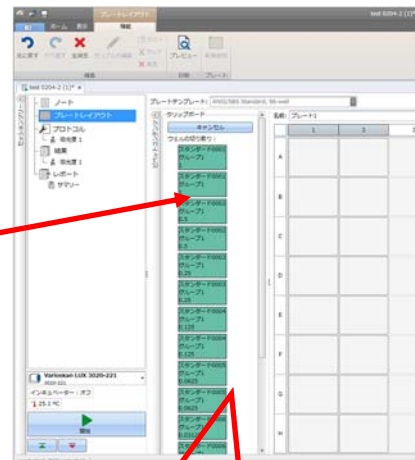
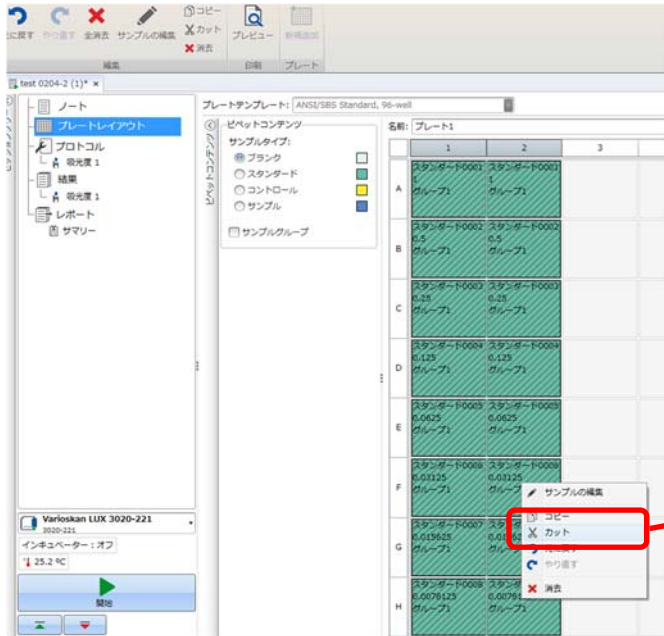
② Change the plate layout settings

Click “プレートレイアウト” on the “セッションツリー”

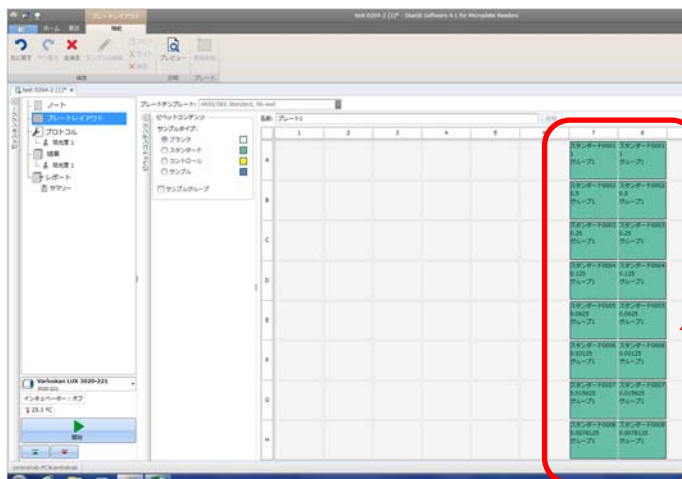


※ If a session save at this step, layout settings of a measured session will be overwritten.

Migrate plate layout settings (cut & paste)

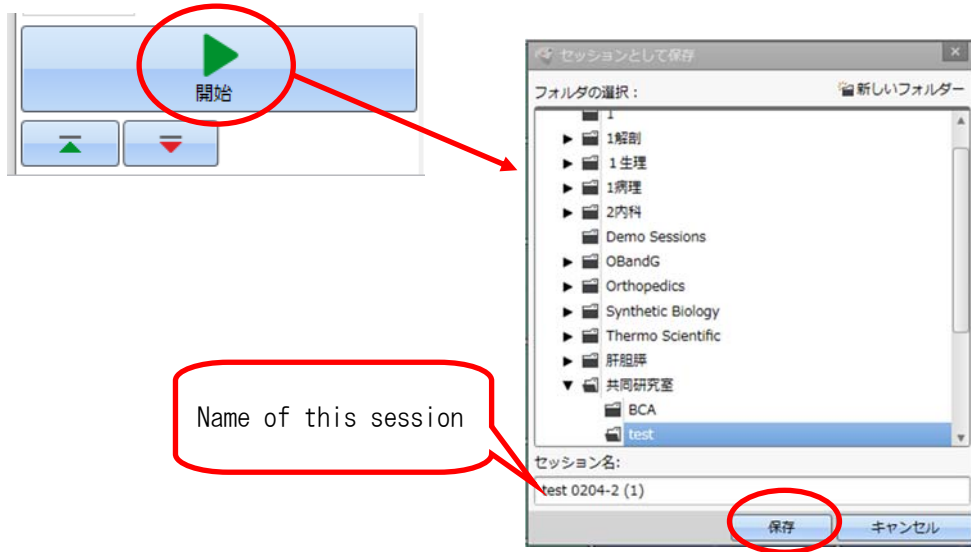


Move settings to clipboard



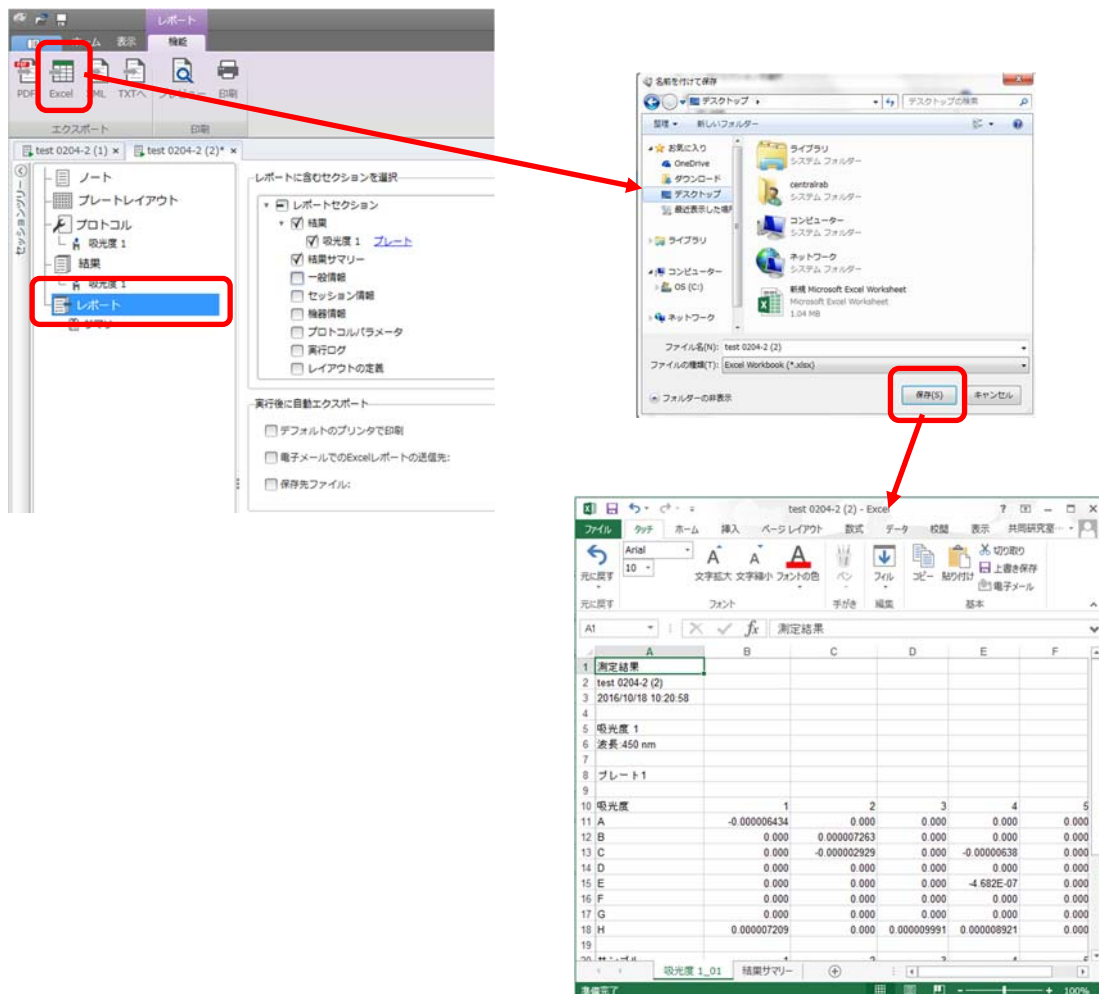
Select wells (Click & drag) to paste contents of the clipboard automatically

③ Start “開始” (to read plate)



④ Export the result

Click “レポート” on the session tree

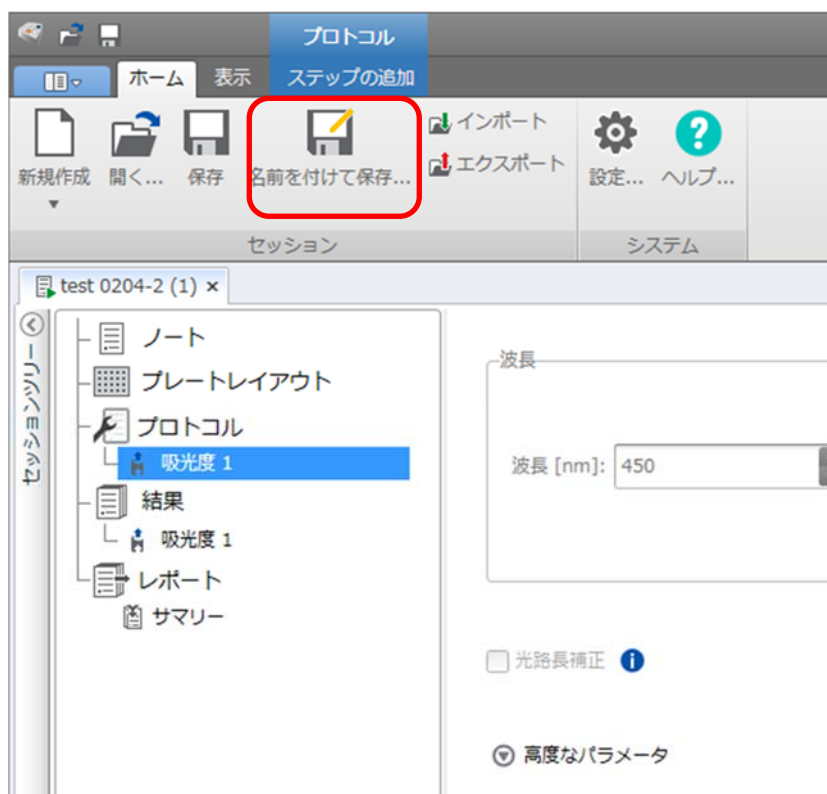


In case to change protocol

Measured sessions can not be change following settings
Protocol (Change , Add)
Type of plate (96well → 24well etc.)

Save as “名前を付けて保存“, all of the settings can change.

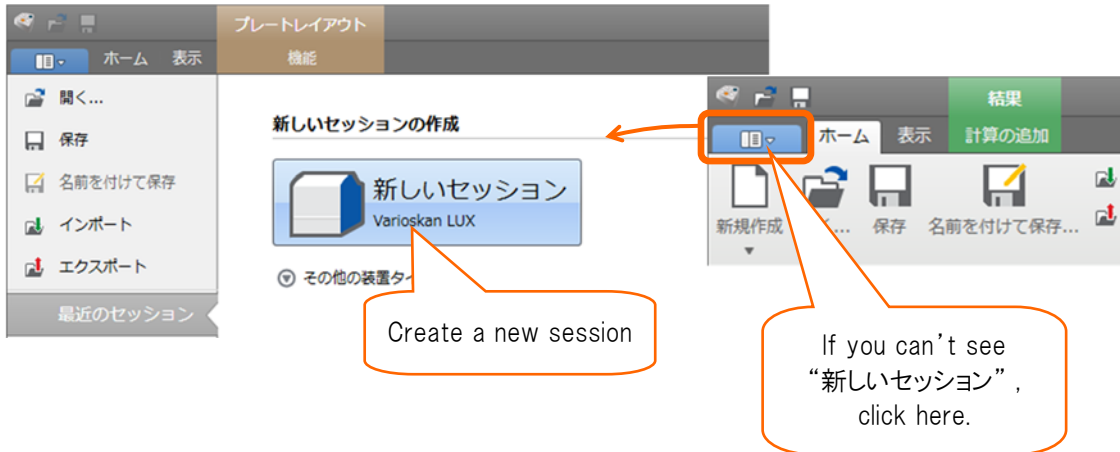
“ホーム“tab → 名前を付けて保存



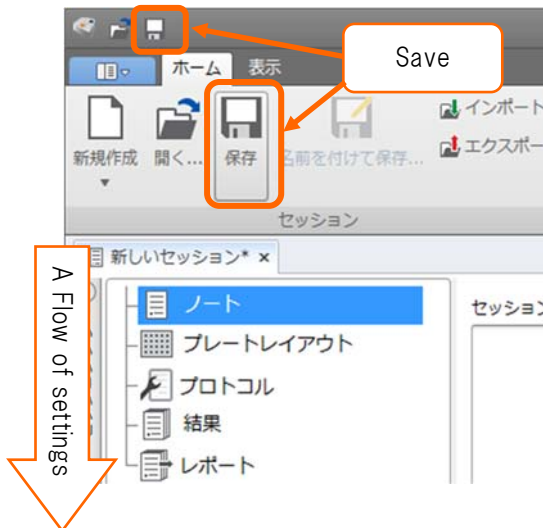
<Create a new session>

In case of running a same protocol more than once...
 Saved session with measurement data can be modified plate layout and
 start the session as a new session.

1) Click on “新しいセッション”



2) Define plate layout, protocol etc..



プレートレイアウト	Select the plate template Setting the plate layout	All wells are read if there are no layout settings.
プロトコル	Measurement protocol	
結果	Results Analysis settings	These settings can change after reading.
レポート	Export settings for results	